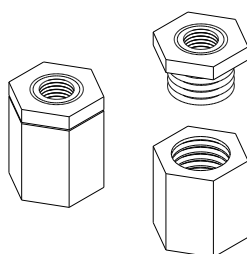


# Ashby Fixing

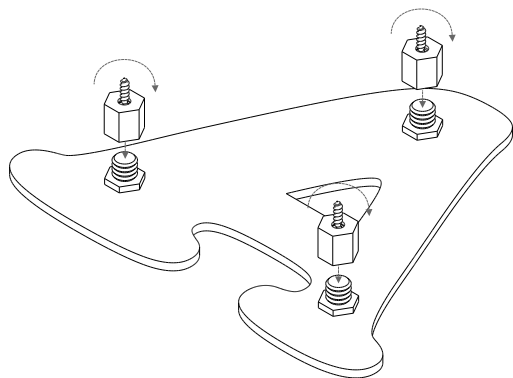
Info & Tech

## Nickel Locator

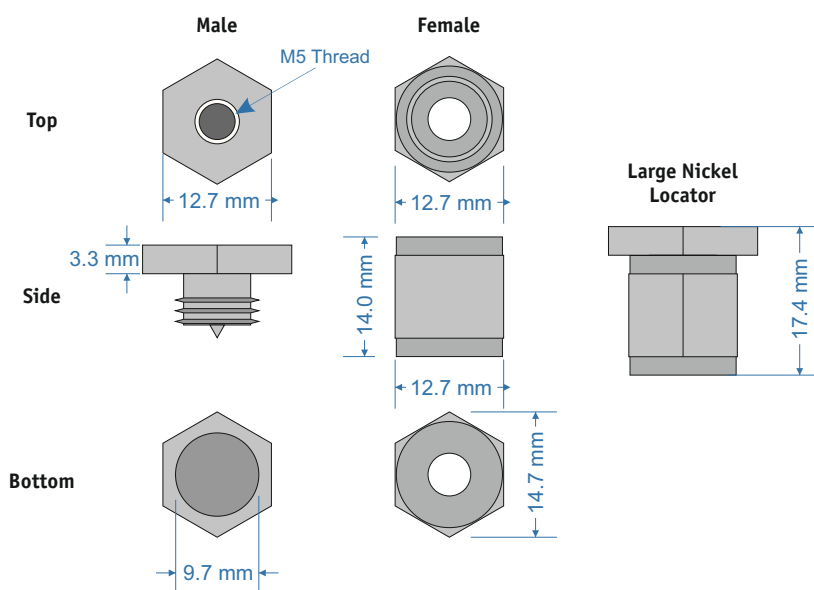


### Large Nickel Locators

**Product Code:** BL(N)L (Nickel)  
**Locator Area Req:** 14.5mm Diameter  
**Stand off Distance:** 17.4mm  
**Overall Dimensions:** 17.4mm (Tall) x 14.5mm (Diameter)



Only available in one size.



**Tel: 0118 981 5343**

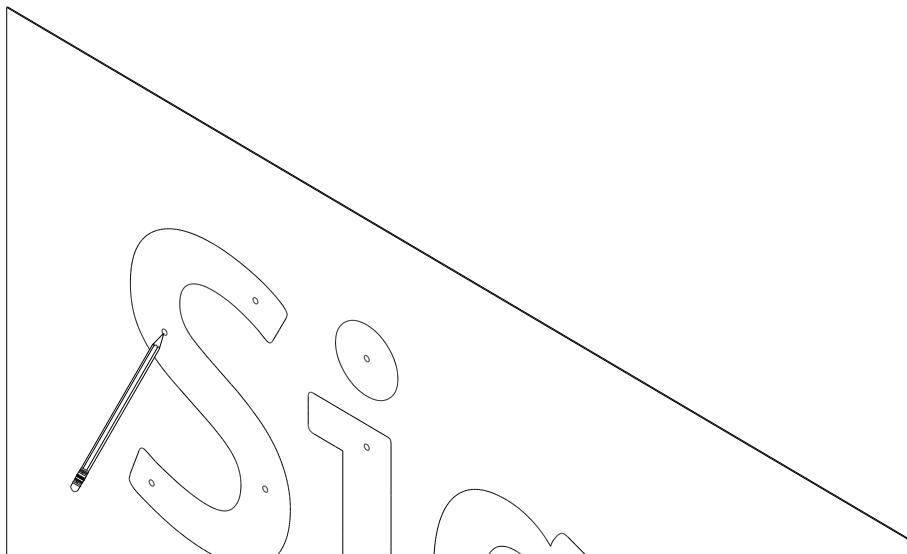
8:00am - 6:00pm, Monday to Friday

**sales@ashbytrade.co.uk**

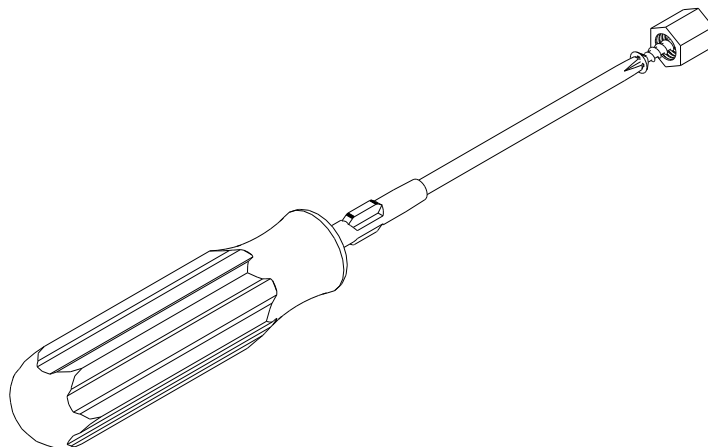
**www.ashbytrade.net**

## Wall mounting letters with Nickel Locators

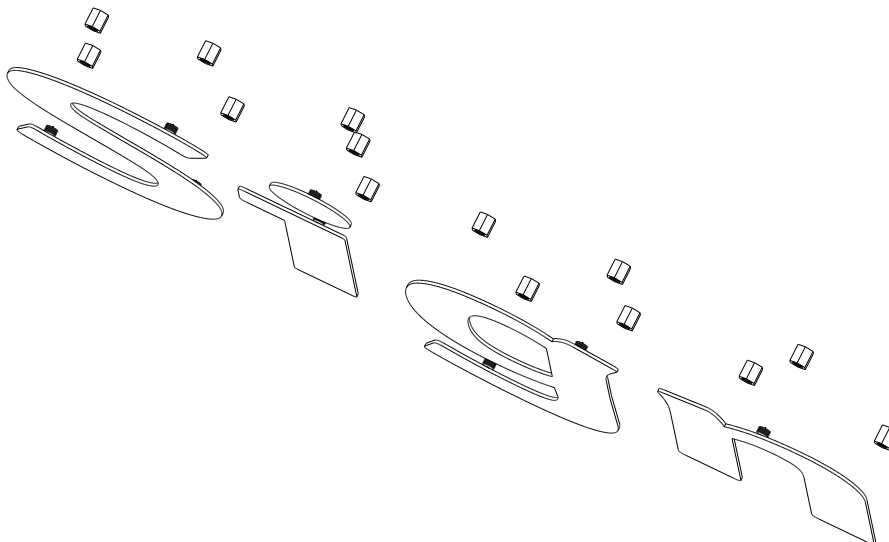
1. Using the Paper Template - Mark the positions of the locators on the wall using a drill or marker.



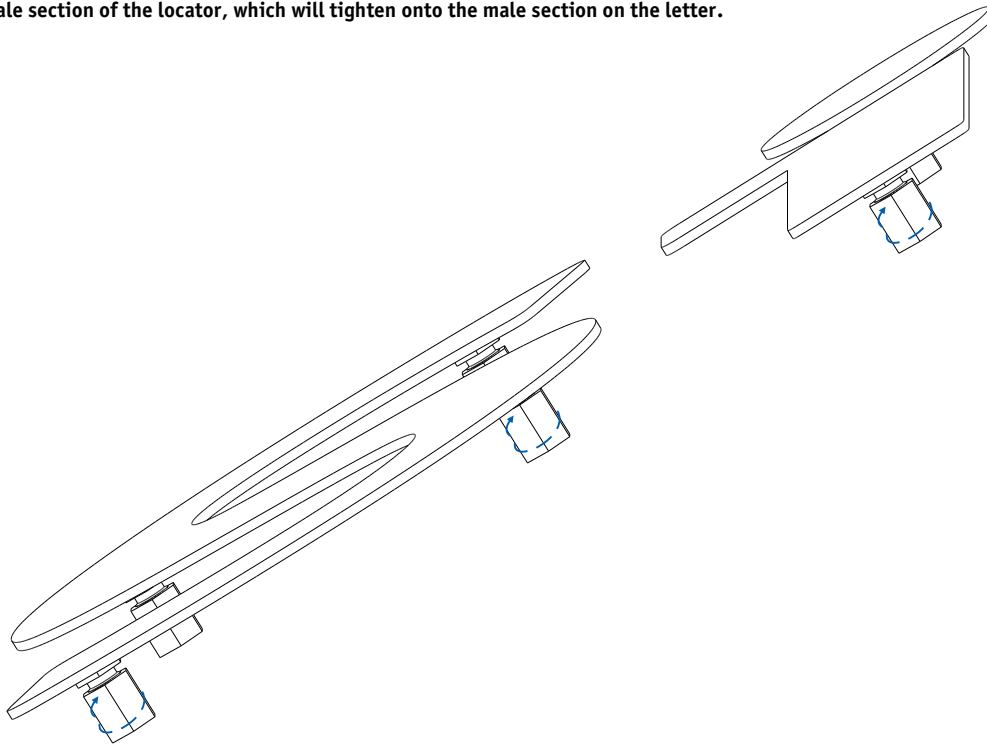
2. Now screw the female section of the nickel connector to the wall in the position of the hole marks making sure not to over tighten as the locator will be required to spin.



3.1. Connect the male section to female section on the wall.



3.2. Turn the female section of the locator, which will tighten onto the male section on the letter.



4. Job Done!!!

