

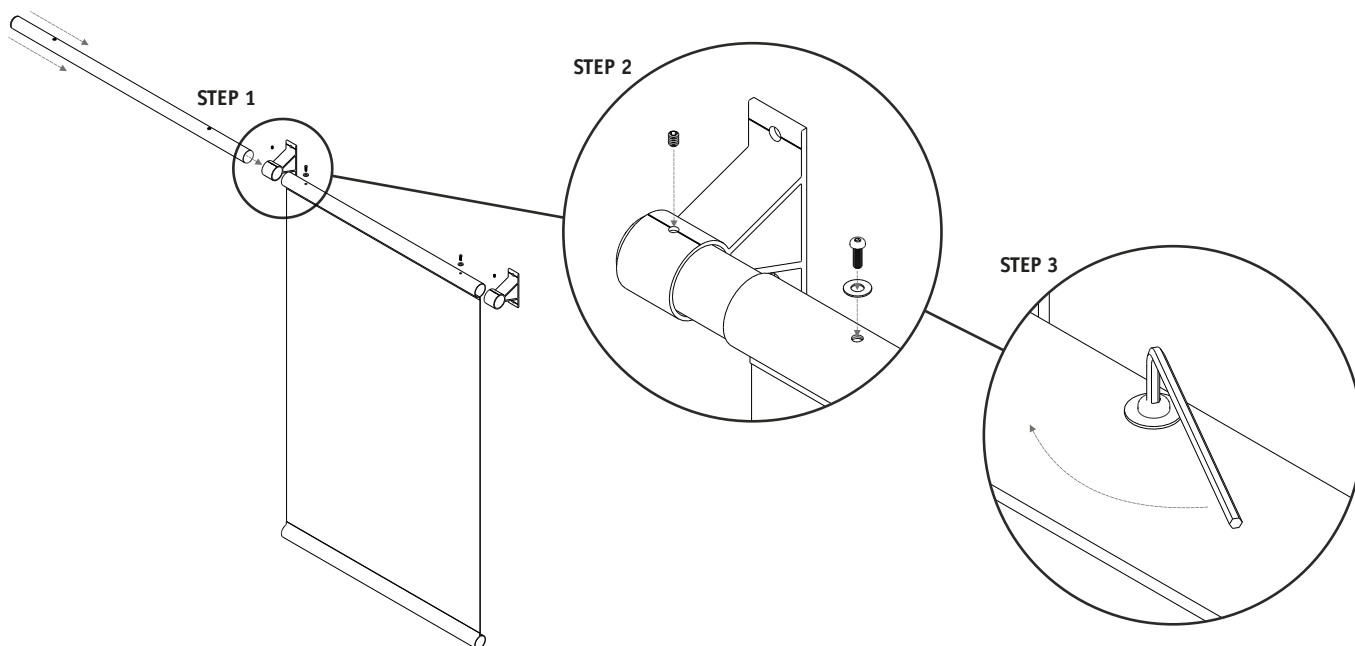
Tools Required



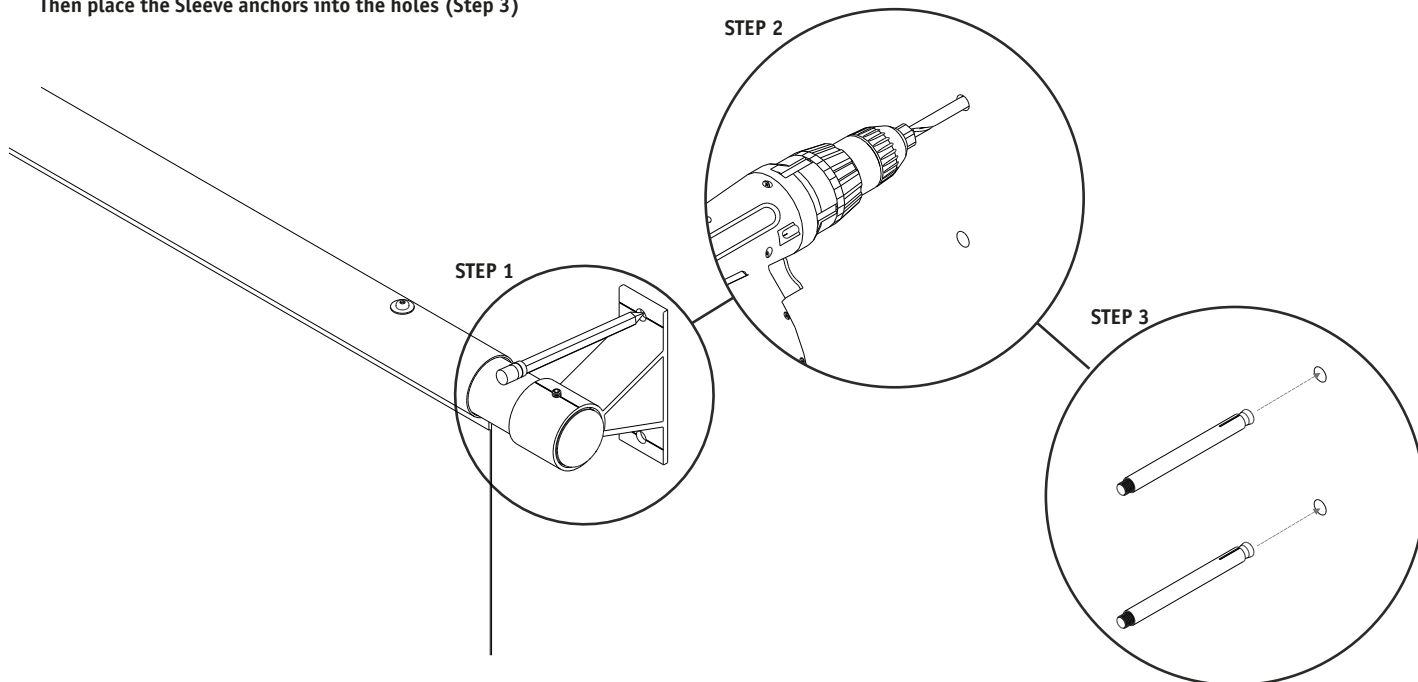
BANNERFAST 180

Wall Mounted Tension Mounted Banner System Assembly

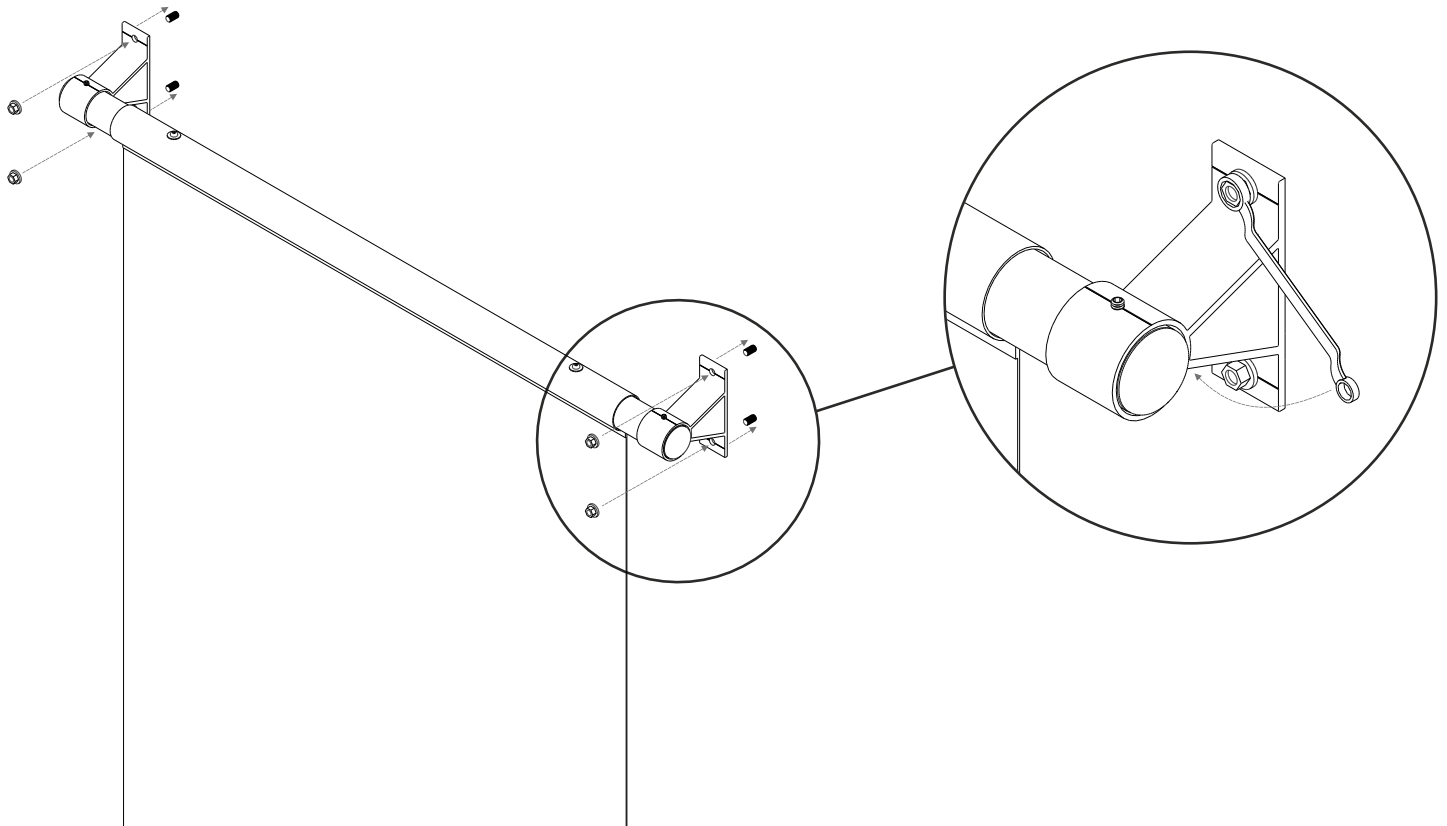
1. Place the Banner between the top brackets and slide the top post through. Then fix into place with the grub screw and the M6 Screw (C/W washer).



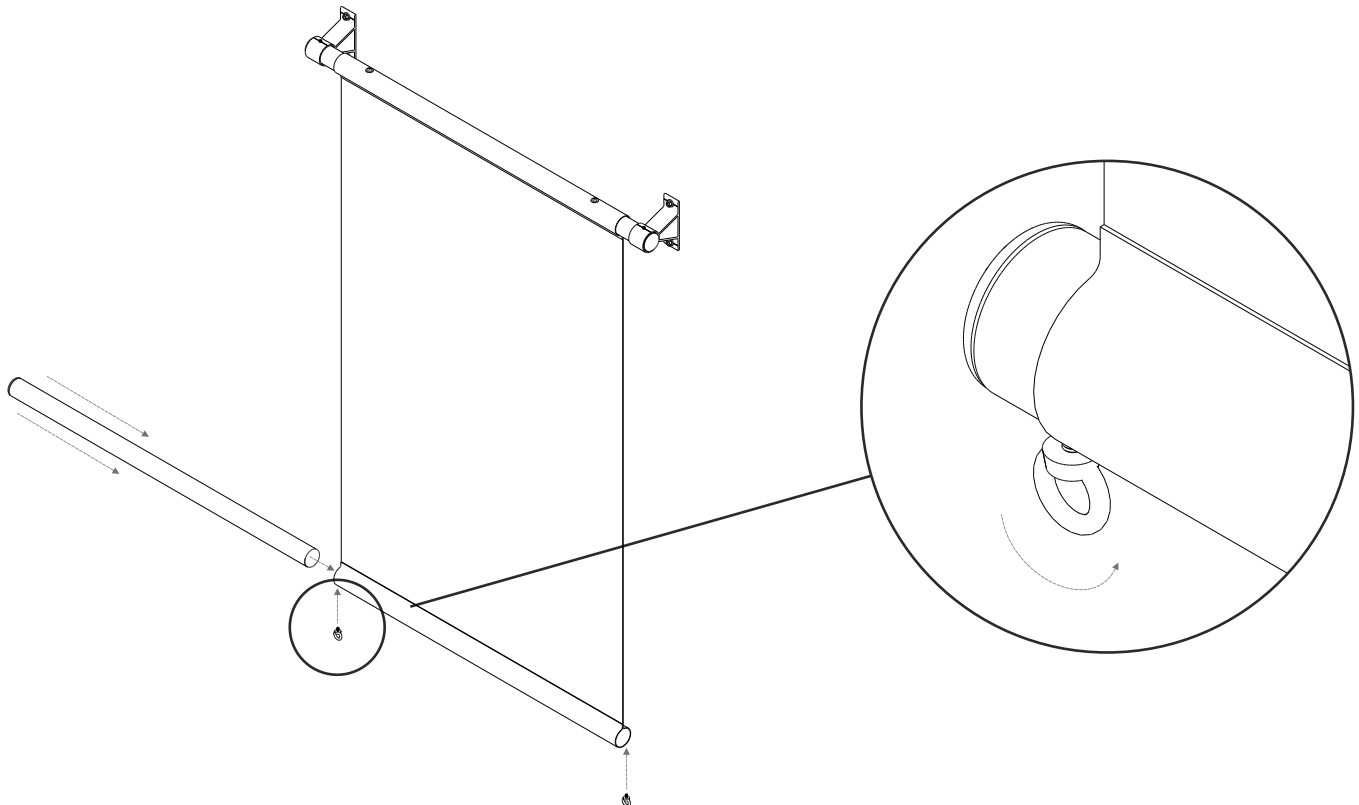
2. Mark the position of the Top post and bracket (Step 1), drill the holes for the Anchor Bolts (Step 2) Then place the Sleeve anchors into the holes (Step 3)



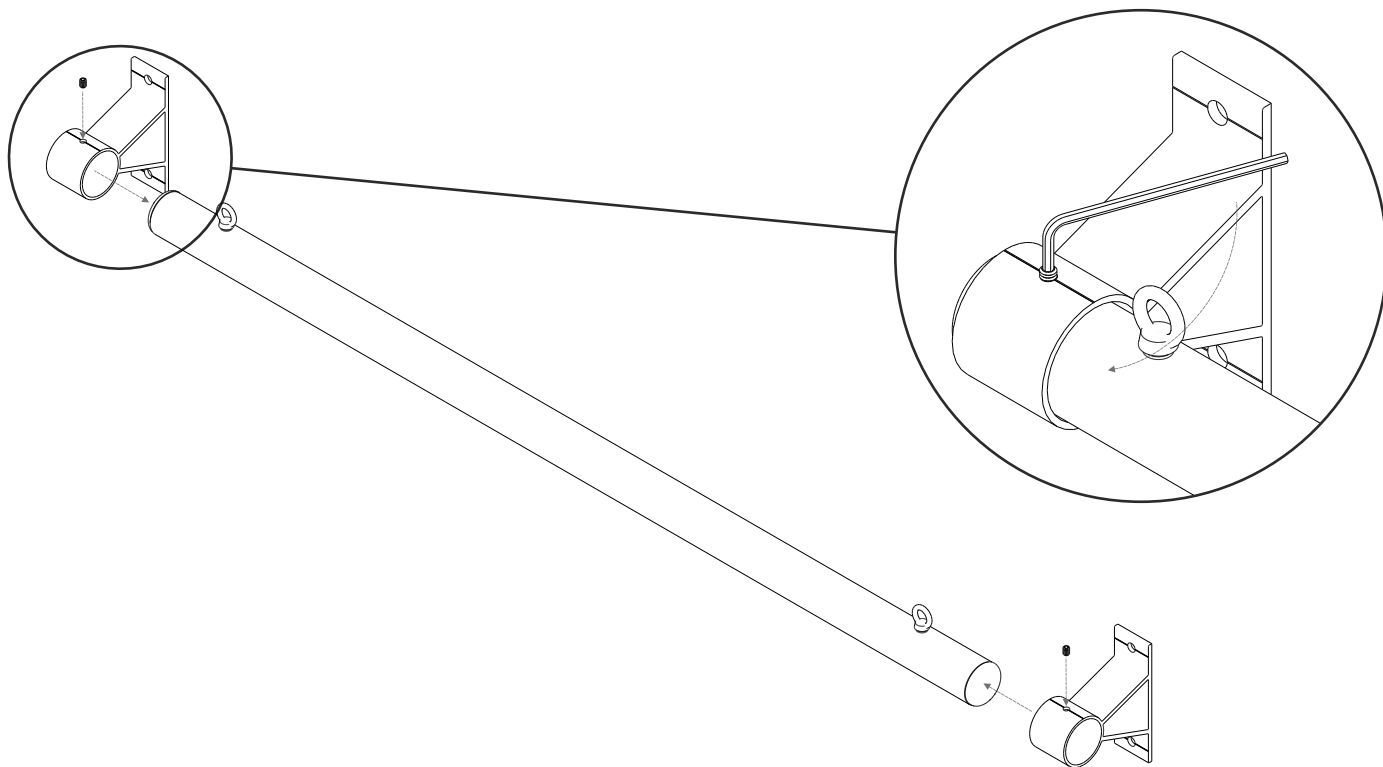
3. Slot the Bannerfast 180 Top Post and Brackets onto the sleeve anchors and tighten into place.



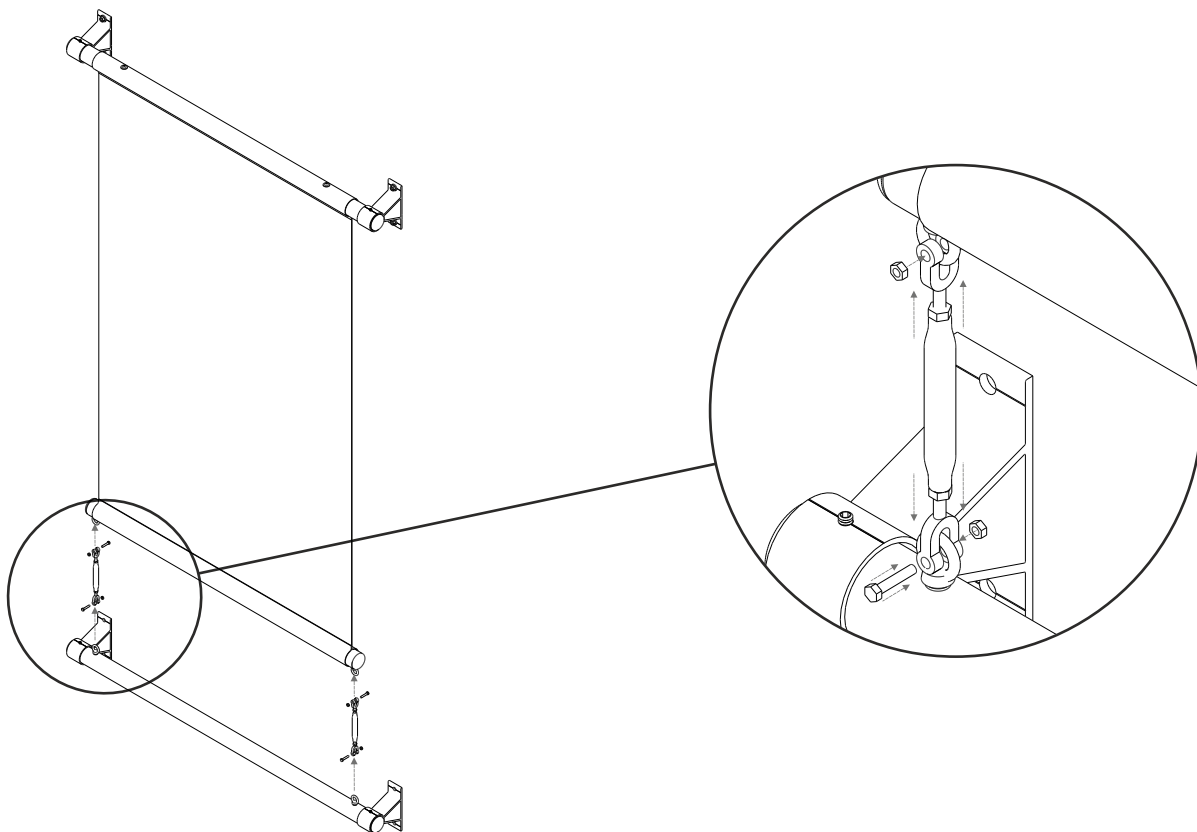
4. Slide the Middle Post (No Baseplate) into the bottom slot of the banner and stop it from sliding out using the M6 Eyebolts.



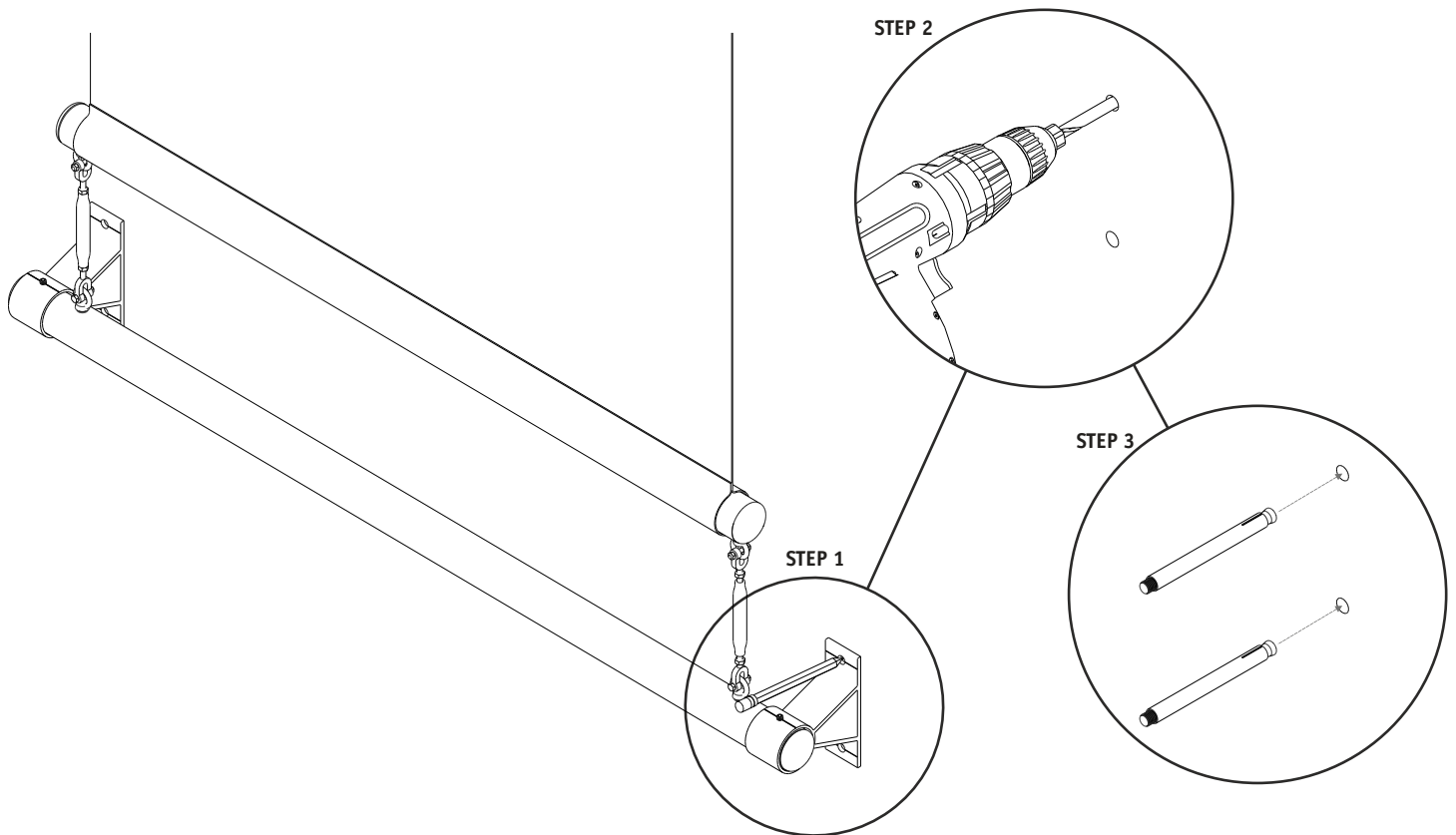
5. Slide the other two brackets onto both ends of the Bottom post and tighten into place using the grub screws.



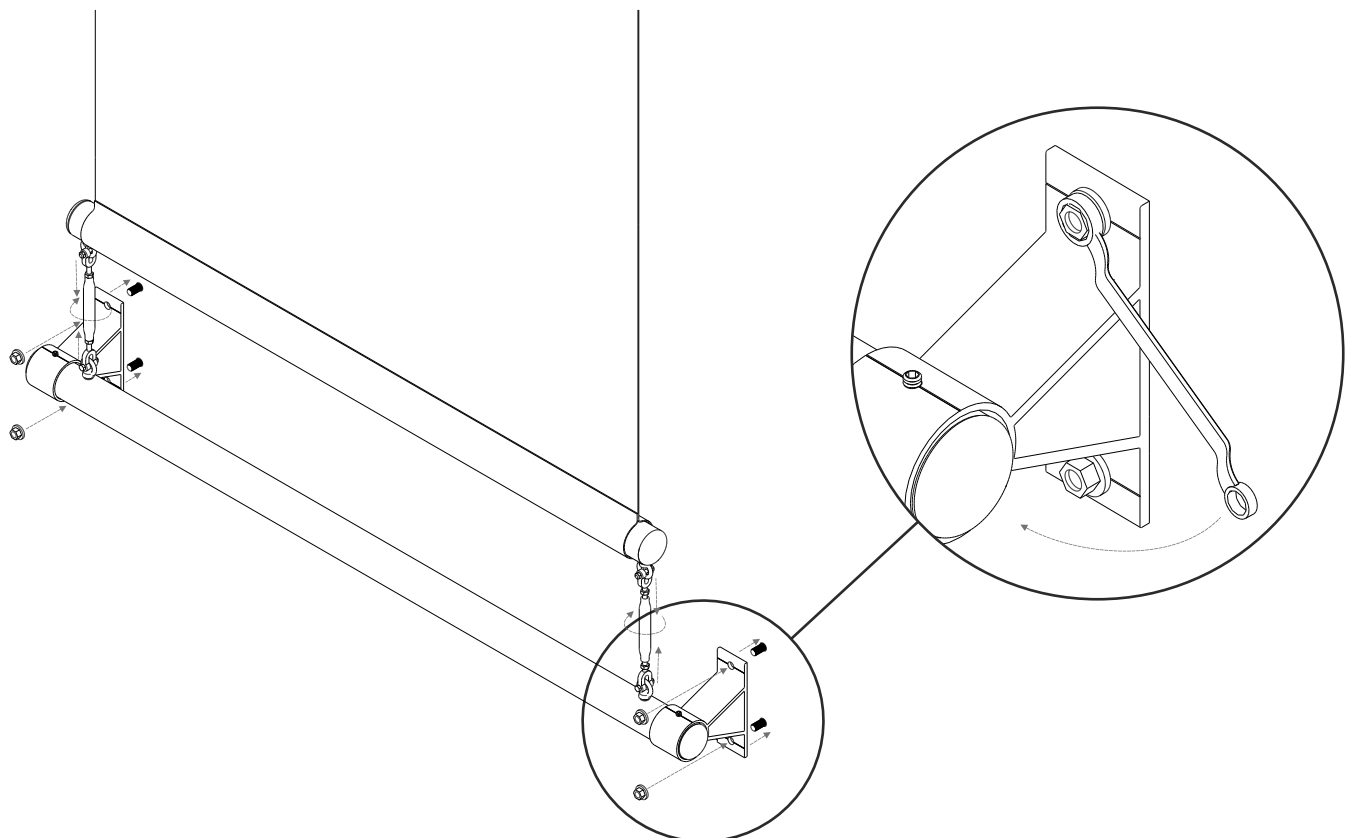
6. Connect the Bottom post to the middle post using the rigging screws (leaving the tension on the rigging screws loose).



**7. Mark the position of the Bottom post and bracket (Step 1), drill the holes for the Anchor Bolts (Step 2)
Then place the Sleeve anchors into the holes (Step 3)**



**8. Slot the Bannerfast 180 Bottom Post and Brackets onto the sleeve anchors and tighten into place.
Then adjust the rigging screws to create tension on the banner**



9. Your BannerFast 180 System is now fully fitted

